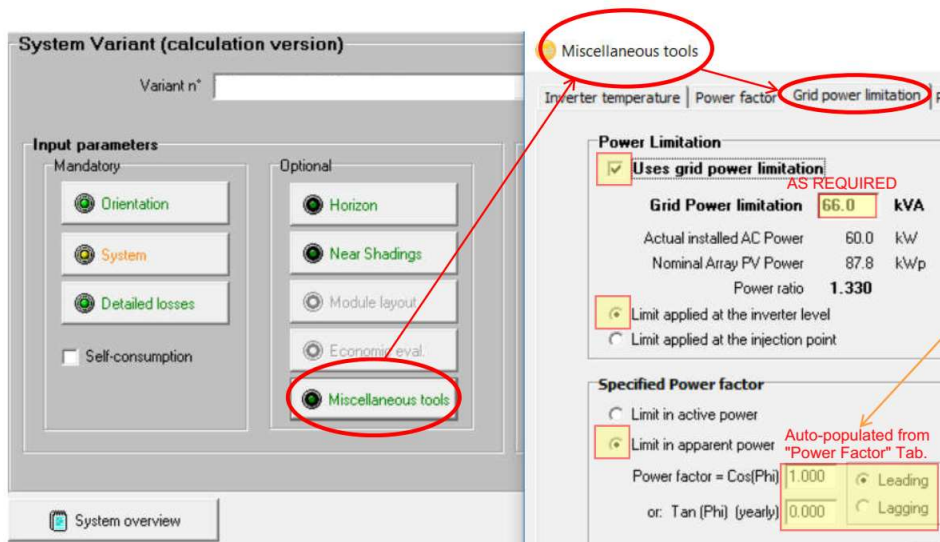
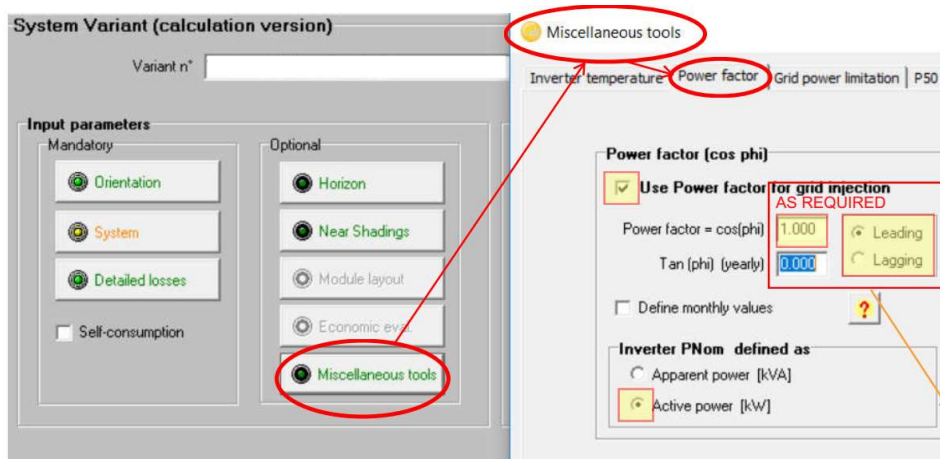


March 9th, 2018

**SUBJECT:** PVSYS Settings for CPS Inverters with KVA Overhead  
(50KW/55KVA; 60KW/66KVA; 100KW/111KVA; 125KW/132KVA)

The accuracy of PVSYS production simulations depend on additional settings not contained in the OND file. The settings are located in the “Optional” section of the “Input Parameters” Screen – see screen shot below. In the “Optional” section, the “Miscellaneous Tools” button will open a dialog box with multiple tabs. The “Power Factor” and “Grid Power Limitation” Tabs must be configured as shown below (with the appropriate level and phase of the desired Power Factor) to achieve accurate production simulations. The sections highlighted in yellow must be configured as shown or else the simulation may produce more Real Power than is available from the inverter.



*Stephen Ballinger*

Stephen Ballinger  
Application Engineer  
[stephen.ballinger@chintpower.com](mailto:stephen.ballinger@chintpower.com)