

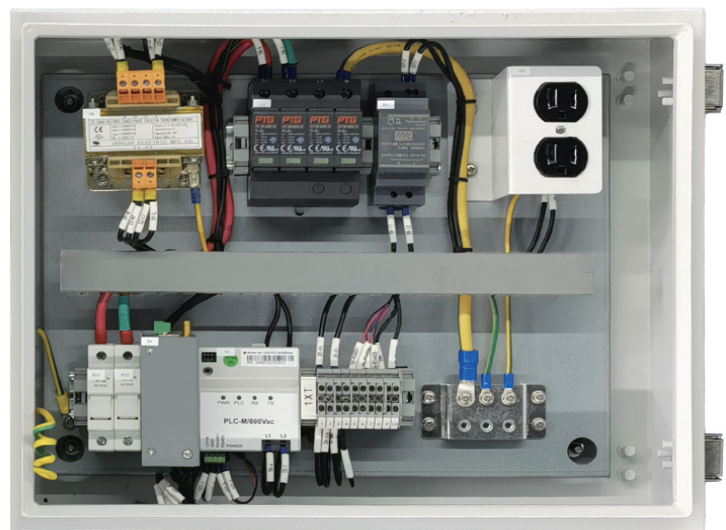
CPS AC-PLC KIT-800V/US for CPS 250/275KTL Inverters



The CPS AC-PLC KIT 800V/US is designed for the implementation of power line communication (PLC) over the AC conductors on the low-voltage side of a PV system enabling a low-cost and reliable solution for data communication and control of the 250/275KTL inverters. At the signal source side, the PLC modulation device inside the CPS AC-PLC KIT transforms the data to be transmitted into high-frequency signals through a series of operations such as encoding and modulation, and couples the high-frequency signals to the AC conductors through coupling circuits. At the receiver end within each 250/275KTL inverter, the PLC demodulation device separates and restores the modulated data carrier signals to their original form. The CPS AC-PLC KIT includes the FlexOM Gateway, 12V DC power supply, surge and over-current protection, and a 120Vac convenience outlet all mounted and pre-wired in a weatherproof NEMA 4X enclosure.

Key Features

- Low-cost PLC communication solution
- Preconfigured for plug-and-play
- Integrated FlexOM Gateway
- Compatible with CPS FlexOM Monitoring platform
- All hardware mounted and pre-wired
- NEMA 4X outdoor rated enclosure
- Provisions for padlock / LOTO
- Surge protection included
- 120Vac convenience outlet
- Supports up to 32 devices
- Certified to UL 62369-1



Internal View of AC-PLC KIT 800V/US Enclosure



Model Name	AC-PLC KIT-800V/US
Configuration	
DAS equipment	CPS FlexOM Gateway, Ethernet (standard) / 4G (optional)
AC-PLC communication device	Standard
Input Parameters	
Number of input circuits	1
OCPD type	Fuse, 1000V, 16A
Compatible inverter(s)	CPS SCH250/275KTL-DO/US-800
Input voltage	800Vac, 50/60Hz
Input conductor size	#6 – #14 AWG CU
Output Parameters	
Convenience outlet	120Vac, 50/60Hz, 15A
DC power supply	12Vdc, 2A
FlexOM Gateway	
RS485 port / inverter daisy-chain	Isolated RS485, max.32 Devices
Auxiliary port / third-party data logger	AUX Port, Isolated 3 Pin RS485, A+ / B- / G
FlexOM service / third-party server	Internet, Primary MQTT / Internet, HTTPS or Secondary MQTT
Ethernet port / SCADA client	RJ45, 10Base-T / 100Base-T, Ethernet Port, Modbus/TCP
4G cellular module	LTE-FDD/LTE-TDD
Mechanical	
Dimensions (W x H x D)	13.8 x 13.8 x 5.9in. (350 x 350 x 150mm)
Weight	39.7lbs (18kg)
Padlockable enclosure (LOTO)	Yes
Installation method	Wall or rack-mounted
Conduit knockouts	Pre-punched, 1" trade size, 5 each
Environment	
Enclosure protection degree	NEMA Type 4X
Operating temperature range	-22°F to +140°F / - 30°C to +60°C
Operating humidity	0 to 95%, non-condensing
Operating altitude	13,123ft / 4,000m (no derating)
Safety	
Certifications and standards	UL 62369-1, IEC 60950, FCC Part 15B
Warranty	
Standard	1 year

